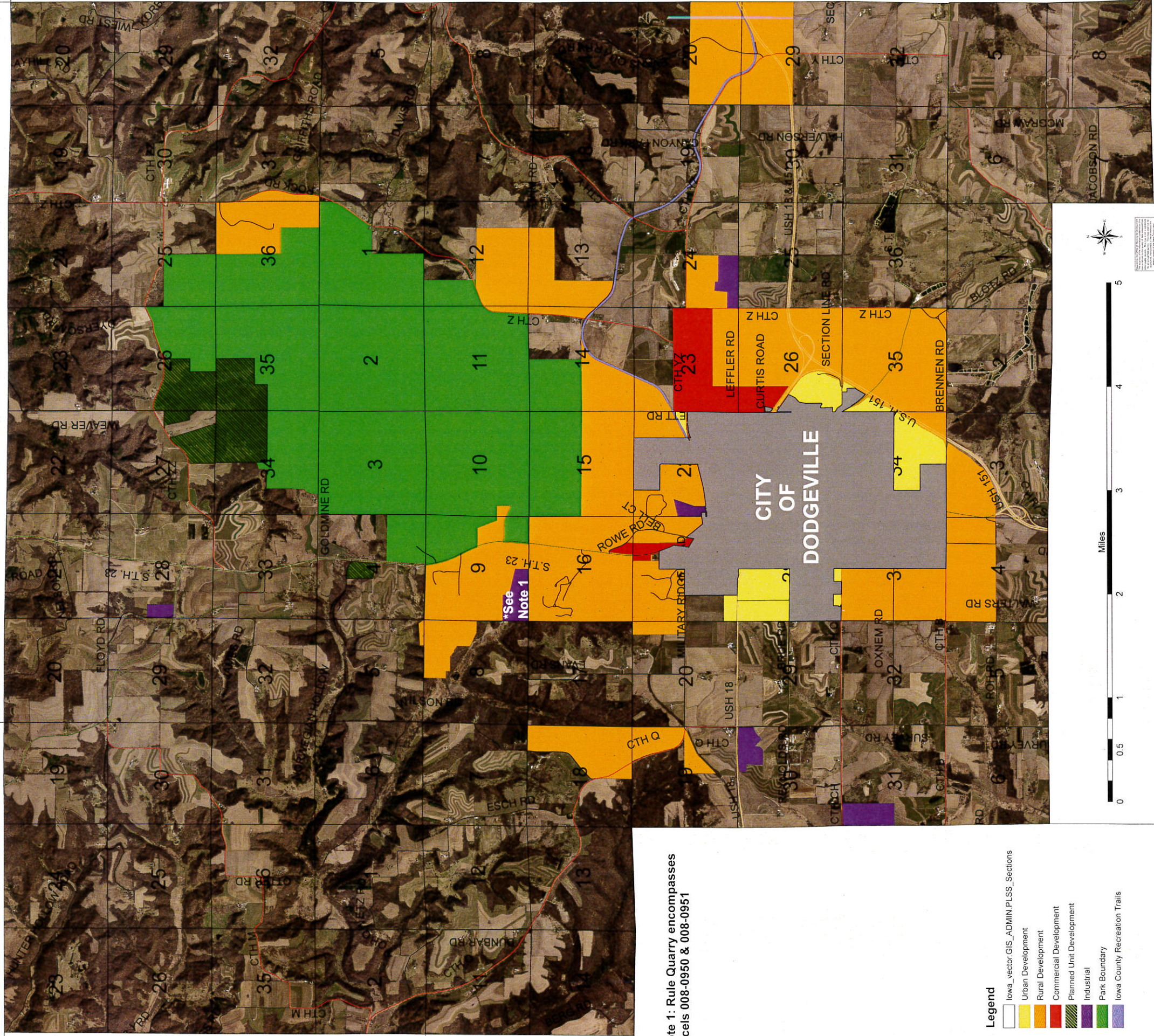


LAND USE MAP H.1
TOWN OF DODGEVILLE
-IOWA COUNTY, WISCONSIN-



*Note 1: Rule Quarry encompasses parcels 008-0950 & 008-0951

- Legend**
- Iowa_vector.GIS_ADMIN.PLSS_Sections
 - Urban Development
 - Rural Development
 - Commercial Development
 - Planned Unit Development
 - Industrial
 - Park Boundary
 - Iowa County Recreation Trails